

PhilaJournal

www.gtapa.org

Winter 2011

Volume X Number 2 Whole Number 38 ISSN 1718-2387



Area Philatelic Alliance
Greater Toronto
gtapa

*Happy Holidays
from PhilaJournal!*

THE GREATER TORONTO PHILATELIC ALLIANCE

OFFICERS

President – Larry Friend
Vice President – Robert Owczarz
Secretary – Peter Butler, FRPSC
Treasurer – Tom Malicki
Past President – Peter Butler, FRPSC

DIRECTORS

**Don Beaumont, Zygmunt (Ziggy) Borowski, Jim Carleton,
Doug Cockburn, Ron Dell’Agnese, Steve Haddock, Bob Hattam,
Joe Janthur, Jerry Kalyn, John Laraway, Lev Levner,
George MacLean, Tony Manson, Leon Matthys, Ernie Nyitrai,
Jerry Piotrowski, Garfield Portch, FRPSC, Harvey Shuter,
Bob Thorne, FRPSC, Mike Turk, Owen White**

MEETINGS

**Directors meet monthly on the fourth Wednesday at the
Vincent G. Greene Philatelic Research Foundation
10 Summerhill Avenue, Toronto**

Visitors are welcome!

MEMBER CLUBS

Ajax Philatelic Society
Bramalea Stamp Club
East Toronto Stamp Club
Insurance & Banking Philatelic Society
North Toronto Stamp Club
North York Philatelic Society
Oshawa Whitby Stamp Groups
Polish-Canadian Coin & Stamp Club
Scarborough Stamp Club
Scouts on Stamps International
Toronto Stamps Collectors’ Club
Ukrainian Collectibles Society (Toronto)
West Toronto Stamp Club

Welcome to Winter 2011 PhilaJournal

Volume X Number 2 Whole Number 38 ISSN 1718-2387

The PhilaJournal is published quarterly and is distributed free of charge to members of the Greater Toronto Philatelic Alliance stamp clubs to provide readers with news and information on philately with emphasis on the GTAPA membership and area clubs.

TABLE OF CONTENTS

Editor's Input	Susan Butler	2
President's Viewpoint	Larry Friend	3
The Machin Corner	Dave Moss	5
Clippings & Commentary	Peter Butler	7
Philatelic Elements	Frank Alusio	10
Coveting Covers	John Wilson	12
Scouts on Stamps	Tony Manson	16
Stamps from ATMs	Mark Stelmacovich	20
Santa's Canadian Resident Status	Tony Shaman	24
Stamps of Ireland	Margaret Challenger	26
Siege of Przemyśl	Jerry Piotrowski	28
Mark Your Calendar		30
Club Listings		32

Subscriptions

Non-members may subscribe to PhilaJournal for an annual fee of \$16.00.

Mailing Address

GTAPA Box 45 260 Adelaide Street East, Toronto, ON M5A 1N1

Editor

Susan Butler sbutler@ilap.com 416-690-4666 or 416-919-0147

Advertising

Larry Friend lfriend@sympatico.ca 905-723-8798

Printer

Nova Printing (905) 281-3231
2550 GoldenRidge Rd., Unit 6 Mississauga, ON L4X 2S3

Publishing Dates 2012

February 22 May 23 August 22 November 28

The Editor's Input

Susan Butler

sbutler@ilap.com

Brrrrr!

The weatherman tells us that we are to look forward to a winter with lots of snow. While some of us dream of sunnier climates, I know what the philatelists are thinking..... “More time for stamps!”

Once again I am happy to announce that PhilaJournal has added another regular column to its list. Tony Manson, respected philatelist and expert in the area of Scouts on Stamps, will be writing about this interesting topic in each of the upcoming issues.

A special thank you goes out to Mark Stelmacovich, Tony Shaman and Margaret Challenger who submitted articles for this winter issue. Remember that we are always looking for articles of interest to GATPA members. Call or email me with your idea and I will send you the instructions.

The Lung Association Christmas Seals remind us, yearly, that life threatening diseases of the lung continue to need our research dollars. When I was young, we all knew someone who had been “in the san”. The arrival of the Christmas Seals was always exciting and, as the youngest, my mother allowed me to put seals on each Christmas envelope that she sent. And.....I was permitted to keep the left overs! “Oh, where are they now?” collectors ask.

Susan

About the cover.....

The skaters that appear on our cover for this issue are the official Canadian Lung Association Christmas Seal for 2011. They are part of the Mouse and Reindeer Series created by Canadian freelance illustrator Jason Blower of Edmonton, Alberta. Check his blog <http://jasonblower.blogspot.com/> to view more of his illustrations. He sounds like an interesting young man.

Last month, Ontario subscribers received foil sheets of seals with a donation request. The art work was created by American illustrator, Marcello Corti and, in fact if you go to www.shoplungusa.org, you will realize that these are indeed the official Christmas Seal of the American Lung Association 2011, as well.

The President's Viewpoint

Larry Friend

lfriend@sympatico.ca

Keeping Collections Active

Does your club have a published mission statement? By clearly laying out your club's mission and vision to current and prospective members you leave no one in the dark. Use your web site and clearly list your club's mission and vision. Print it where possible.

Let me cite an example from our club. Part of our club's mission statement deals with helping sell off unwanted or inherited collections from people in and around our community. Well over a year ago, I was approached by a club member to help him dispose of his collection, as he was ill and would not be able to pick the hobby up again. When I sat down with him he stated he did not want to take a long time to break it up and sell it off. He wanted to offer it to me for a set price. We settled on a price and I bought it even though my preferred method is to break up the collection and give a detailed analysis of the expected sale value of each lot. Selling off the collection in this manner does not put me in a conflict of interest situation because when all is sold, I review the sales totals with the seller and pass on the cash, as I did in this instance. No fee is charged.

Just a couple of weeks ago, the sister of the individual mentioned above called me to help break up her father-in-law's collection. In fact, we were preparing it for in our Oct. 30, 2011 auction. What a nice vote of confidence for the work that we did for her brother.

My trusted partners and I currently receive 3-5 calls a week, asking for help with these types of collections. The real plus of this practice is to put the stamps in the hands of fellow collectors, adds more variety of stamps available to your club and makes the seller happy.

Does your club advertise in Ontario publications dedicated to stamp collectors? Recently, I approached the member clubs of the Grand River Valley Philatelic Association inviting them to advertise in the PhilaJournal. I am happy to say, I had very positive results. Similarly, clubs outside the GRVPA could advertise in Grand News. They offer great rates. Please consider advertising - **"Grow your Club"**

Larry



1240 Yonge Street, Toronto, ON, Canada

416-921-PPUB – www.paullyspub.com

Wednesdays

Quiz night with host Boston Chris

Test your knowledge against Summerhill's wisest

Weekly Prizes – 8 pm

Saturdays

Live Music featuring

The Eddy Smith Band

Postal Covers Wanted

with clear "BOMBAY" Cancellations - from India Between 1885 & 1914

"SEA POST OFFICE"

to international destinations only

"TRAVELLING POST OFFICE"

(used North East Line only)

Stamps

Government of India

Telegraph Stamps - 1881 Provisionals - for 1, 3 & 4 Anna only
(like image shown below)



Contact - Denzil by email at fernandes11@rogers.com

The MACHIN Corner

Dave Moss

davemoss@sympatico.ca

Machin is a Machin is a Machin...

Throughout the years the variations of basic stamps have fascinated me. Now this has translated into the subtle changes that can be found occurring on Machins. At first glance, a Machin is a Machin is a Machin. But upon a closer look these similar types can show quite appreciative differences. I refer not to the differences of phosphor or gums but to their head types and other variations in the values including their locations.

The head types show differences that now total over 16 and can be easily seen between two different items side by side. To demonstrate this, simply view a 3p Ultramarine against a 5p Greyish Violet and it will be clearly seen that the 3p has a solid background (this is a B1 type head) while the 5p has a graduated background (this is a C1 type head). Other areas which demonstrate differences include the closure and/or non-closure of the central cross at the top left and the number of curves, one or two, in the hair just below the diadem. Also noticeable are the distinct lay, the details and the quantity of the pearls in the necklace and the dividing line between the back of the neck and the adjacent background. If one views a 1p Crimson against any of the Regional values a difference of about 3.25mm can be seen in the overall heights of the heads and about 2.00mm in their overall widths.

The value differences can also be readily seen when doing a comparison check between the pre-1984 4p Rust and the later issued 4p Cobalt Blue with a redrawn figure. Another very good example of value difference is that seen between the 1981 issue of the 25p Lilac and the later released 25p Salmon Pink.

Yet another variation, although it is not as easy to see with the naked eye, is the actual location of the value. In the Deegam Machin Handbook, Douglas Myall, through a vast amount of work, has determined the location of each value tablet relative to their left hand and lower margins respectively. He claims that a specific stamp can have its origination determined from this work. The differences can be as much as 0.95mm horizontally and 1.35mm vertically for the 1p and as much as 0.55mm horizontally and 1.20mm vertically for the 2p. These two values represent the most common types of Machin yet produced not counting the NVI stamps.

So until next time good luck and happy sorting.....

Dave



A
WELL
KEPT

Secret?

Some may say so, but why not find out what other members of the GTAPA have discovered?

We hold regular stamp auction that cover the world. If you are looking for a single stamp or a boxful, a specific set or cover, that special item or an entire collection you may find it in one of our auctions. With hundreds of lots each year in all sizes and price ranges, each sale has something for everyone!

A complimentary catalogue of our next sale is waiting to be mailed.

John Sheffield Philatelist Ltd.

PO Box 81-PA, Lambeth Stn.
London, Ontario, Canada N6P 1N9
Telephone (519) 681-3420 Fax (519) 668-6872

Email: john@johnsheffield.com

View each auction (and our retail stock)
on the internet

www.johnsheffield.com



Clippings & Commentary

Peter Butler, FRPSC

pbutler@ilap.com

In 1957, the Philatelic Specialists Society of Canada teamed with the Royal Ontario Museum, to put on the Society's first postage stamp exhibition. It lasted for ten days and was held in one of the galleries at the ROM. In a welcoming letter in the show program for those attending the exhibition, the president wrote,

"Stamp collecting has become the number one pastime of all recreational hobbies because it is within the reach of everyone and its appeal has become universal. Although you may not yet be a stamp collector, there are very many aspects of our hobby, any one of which might appeal to you: history, geography, art, design, printing methods, engraver's techniques research and many more. Through selected pages from the collections of our members, we have attempted to show you some of the faucets in which our wonderful hobby can be enjoyed."

The program for the exhibit was 40 pages in length, listing all the exhibitors and their collection topics, along with 34 articles written by Douglas Patrick, a member of the Society and a writer of a weekly column with the Globe and Mail newspaper, titled the *Ge&M Stamp Club*. There was no competition among the club exhibitors. The president added, "The showing is non-competitive. The exhibitor is thereby enabled to display selected pages and – as the strife of rivalry is eliminated - he has the opportunity of mounting his gems in a harmonious setting." Beautifully put, I might add!

The Museum added that, *"From the stamps of today to tablets written and sent by postal means of some sort, a thread leads the student of philately forward to enchantment. The first urge – the most vital one – however is the urge to collect. Without it there would be no knowledge, history, science, schools, libraries nor museums. In short, there would be no civilization. Only by assembling minutiae, by preserving intangible values, by devoting study and assiduous work has our world been formed."*

Doesn't that lift philately up a notch or two!

Is there a message here about what could bring energy and excitement to stamp clubs? Definitely, and it has to do with the benefits of major projects like the PSSC did in 1957 in cooperation with the ROM. Projects of any kind, from setting up a display in a local library to planning a regional exhibition, bring club members together in shared work. Stay tuned. In a future issue of PhilaJournal, there will be an announcement of a terrific project between the GTAPA and the Pearson International Airport.

Peter

Taylor Stamps

Brampton, Ontario

Specializing in

Canada, BNA and
Commonwealth



Rob Taylor/Rhonda Kavanagh

Interested in Buying and Selling

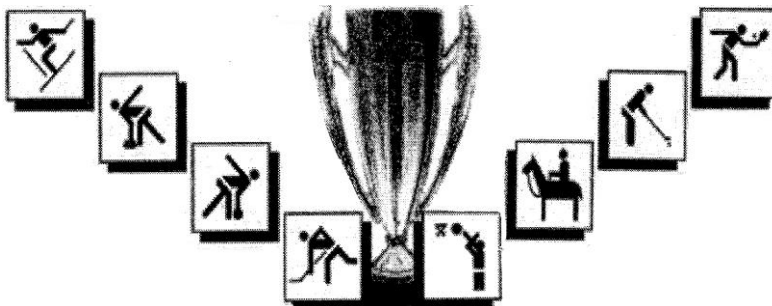
Please Email - rob@taylorstamps.com

Visit our Ebay Store -

<http://stores.ebay.ca/Taylors-Stamps>

7 Bobcat Street, Brampton, ON, L6R 1C9

Call 905-799-0103



Represented by Michael Moffat

The Trophy Centre

RECOGNITION PRODUCTS - ENGRAVING

24 RONSON DRIVE – UNIT 15

(Showroom on Shaft Rd.)

Tel: 416-244-2362

Toronto Ont. M9W 1B4

Fax: 416-244-7774

orders@thetrophycentre.ca

The
NORTH TORONTO STAMP CLUB
**POSTAGE STAMP
EXHIBITIONS AND BOURSES**

for 2011-12 - will be held at
YORKMINSTER PARK BAPTIST CHURCH
1585 YONGE STREET, TORONTO

WINTER POSTAGE STAMP BOURSE
SATURDAY NOVEMBER 26th, 2011

SPRING POSTAGE STAMP BOURSE
SATURDAY MARCH 24, 2012

Club sales circuit will be available at all exhibitions and bourses
Refreshments available

Free admission and limited parking..... Wheelchair access

Family and friends welcome

For information - contact Herb
telephone (416) 445-7720
fax (416) 444-1273
email: nstampclub@yahoo.ca

DIRECTIONS

Yorkminster Park Baptist Church is 1 block north of St Clair Avenue
on the east side of Yonge Street - there is subway access from
St Clair station. Free Parking at church is limited -City Parking (Green P)
is available on Alvin Ave. - 1 block east, for which there is a charge

Maximum Cards

Maximaphily (the collection of maximum cards) is one of the many branches of philately. The aim is to collect postage stamps that are affixed to postcards on the picture side and, cancelled with a related postmark.

The three elements should show “concordance”. That is, the postcard, the stamp and the cancellation are required to be related. To put it another way, a maximum card should have a postage stamp with a similar image, affixed to the view side of a postcard and cancelled with a postmark that is as closely related as possible to what is depicted on the stamp and the postcard.

The dimensions of the card must conform to UPU (Universal Postal Union) standards. At least 75% of its area should be used for the picture.

Cards that reproduce the design of a stamp, that are paste-ups, cut outs, or privately produced photos, are not permitted.

A postmark should

- be readable
- bear the name of the post office and date
- tie the stamp to the postcard
- demonstrate maximum concordance between subject, place, and time.

The concordance of place requires a connection between the name of the place or locality of the postmark and the subject of the stamp and the card. The concordance of time is defined by the date of the postmark in the period of postal validity of the stamp.

Maximaphily is not only a collection of philatelic items but is concerned with researching the subject of the stamp, finding a good commercial postcard and securing the best cancellation.

On the next page is an example of an ideal item in full concordance.



Subject:

August Renoir (1841-1919), The French Impressionist painter, born in Limoges, France.

Postcard:

Photo by Durand-Ruel

Stamp:

design identical to postcard

Postmark:

First Day Cancellation, 11 June 1955, LIMOGES

This maximum card shows perfect triple concordance: a picture postcard, a postage stamp, and a postmark.

The design of the cancellation and the place of cancellation (name of the Post office) should have a close and direct connection with the subject of the stamp and of the picture postcard. The 'First Day Cancellation' can only be used when it is in accordance with the above mentioned condition.

Frank



The Holiday Season....

....is a great opportunity to obtain covers and used stamps. Why not ask relatives, neighbours and colleagues to save holiday card envelopes/stamps for you?

A few hundred used stamps will fill a couple of stock sheets of traders.

Coveting Covers

John Wilson

wilsonjn@sympatico.ca

HONG KONG 1862

This unassuming cover (opposite) went for a mere twenty bucks on eBay and must have been overlooked by a number of serious philatelists. It emanates from the Chinese port of Amoy (now known as Xiamen) and still contains its original contents – a bill of lading for goods sent on the coasting steamer “Swatow” on the 25th of February, 1862.

It is stampless, of course! Hong Kong did not receive its own stamps until mid-December of that year. It shows a manuscript marking of “4”, representing the four-cent (2d. sterling) cost of sending a letter between one of the China coast “treaty ports” at which foreign nationals could do business, and the main shipping centre of Hong Kong.

It is a back-up copy of the “consignee’s cover” – a description of goods sent by the same ship carrying the items, a letter which has to pay the mail rate, though it never sees a post office. This copy went by the P and O steamer Azof, which travelled southbound from Foochow on the 25th, cleared Amoy on the 26th, and arrived in Hong Kong on the 28th of February. The “4” in ms. is in black, normally indicating that payment is required. The embossed letterhead on the flap of the letter is that of Dauver and Company, the agents for the goods being shipped.

It is a fascinating document (See page 14), for besides a tael of sugar candy (a little less than 40 grams), the goods shipped were sixty piculs of copper cash (small coins) and a box of Treasure, whose worth was stated to be \$3,000. As each picul was about 60 kilograms, or 133 pounds, this represents a LOT of coinage – nearly four-and-a-half tons of it! At the time, the civil war in China was reaching a crescendo, with the armies of the Taipings poised to enter Shanghai, lightly defended by Imperial forces, but with 4,000 trained soldiers under Gen. Gordon and 7,000 Europeans tossed into the scales. It was a good time to move valuable goods to a safer haven. And so, a simple cover when still paired to its contents, remains a treasure redolent of its era.

John





Shipped in good Order and well conditioned, by
"Lawson & Co."
in and upon the good Ship or Vessel called the
whereof is Master for this present Voyage,

and now riding at Anchor in Amoy and bound for Batavia

One Full Sugar Candy 60 Sixty Piculs of Coffee Beans at 25¢
No. 176/1/1 One Box of Shavers value \$3000 @ 1/2¢

being marked and numbered as in the Margin; and are to be delivered in the like good Order and well conditioned
at the aforesaid Port of Batavia

(the Act of God, the Queen's Enemies, Fire, and all other Dangers and Accidents of the Seas, Rivers, and
Navigation, of whatever nature or kind soever, excepted,)

unto Lawson & Co.
or to his Assigns, Freight for the said has been as above

with Primage and Average accustomed. In witness whereof, the Master of the said Ship or Vessel hath affirmed
to 3 Bills of Lading, all of this Tenor and Date; one of which Bills being accomplished, the others to stand void.

Dated in Amoy 22nd January 1862.

WEIGHT AND CONTENTS UNKNOWN TO

Lawson & Co.

"Are you looking for collections or large lots?"

If you like to buy your stamps by the book full, or by the box full, you are going to enjoy our regular auctions.



Each of our sales offers hundreds of worldwide collections, stocks, box lots, and accumulations that hold fun and profit for collectors and dealers alike.

Contact us today for your FREE colour catalogue or view it online at

www.vanceauctions.com

VANCE AUCTIONS LTD.

P.O. Box 267,

Smithville, Ontario, Canada L0R 2A0

Toll Free Phone: 1-877-957-3364

Fax: 905-957-0100 • mail@vanceauctions.com

Scouts on Stamps

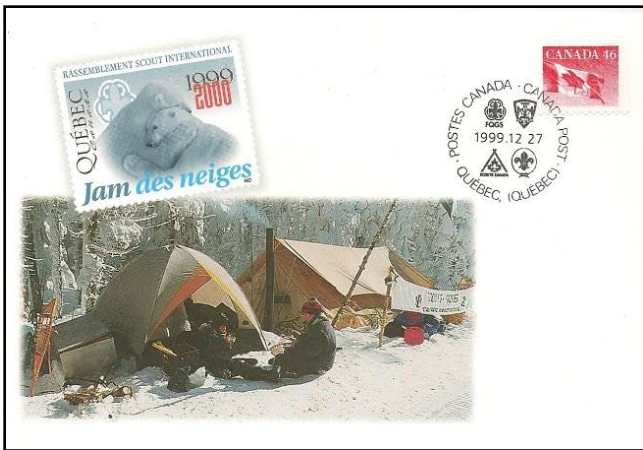
Tony Manson

tony.manson@sympatico.ca

Jam des Neiges

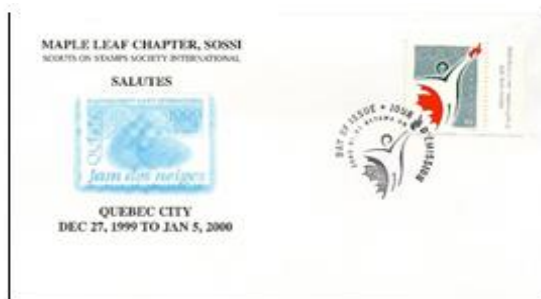
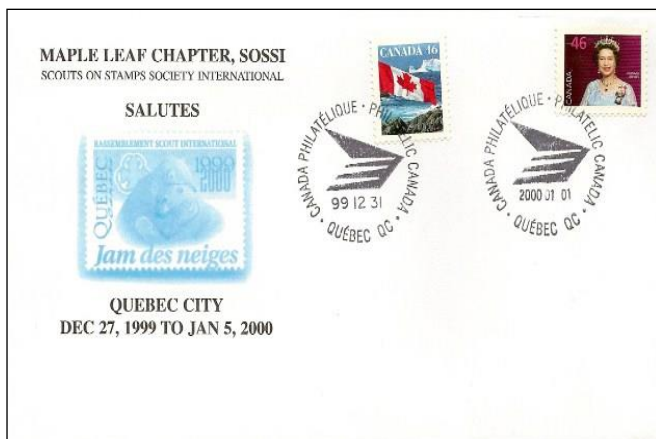
Jam des Neiges (the Snow Jamboree) was held from December 27, 1999 through to January 5, 2000 on the Plains of Abraham in Quebec City. It was billed as the first “Winter World Jamboree” and 3500 scouts plus 800 leaders from around the world braved the cold and the snow as they welcomed in the new century. It also presented an opportunity to obtain some unique covers.

Canada Post issued 5000 Commemorative Envelopes on December 27, 1999 for this event, with a special scouting cancel from Quebec City. However, as early as November they had to cut off any further orders because the high demand triggered a “sold-out” situation.



The Maple Leaf Chapter of SOSSI created a cachet with black printing and the Jamboree logo printed in blue. As well as obtaining the Canada Post cancel (as above) on it, two other uses were created on this cover. One had two stamps and two Canada Post Philatelic cancels from Quebec City – one with a “99 12 31” date and the other with a “2000 01 01” date. This cover then became a “two century” cover.

The other cover had the new Canada Millennium stamp, Scott #1835, with the official FD cancellation for it on January 1, 2000. Canada Post presented gift packages of this issue to each contingent from other countries as a memento of their visit here over the turn of the century.



.....Tony

+++++

Another Update on the Brooklin Stamp Group...

There are several reasons that the Brooklin group has become a booming success, according to its members. They are, in no particular order:

- A beautiful new Community Centre and Library
- A Seniors Centre like no other: large with windows on 3 sides
- A small silent auction each week – each member can contribute 3 lots per week
- Free coffee and cookies
- Tons of stamps available, with many members bringing in stamps, covers and more, for sale or trade.
- Location: Because of the library many people wander in to have a look.....some are even stamp collectors. They get the full Oshawa/Whitby tutorial! There is not a week goes by that 5 or 6 people wander in.

THE BRITISH NORTH AMERICA PHILATELIC SOCIETY

Membership Benefits include

- *BNA Topics, quarterly journal*
- Annual convention and exhibition
- More than 20 specialized study groups
- Regional groups in many cities
- Generous discount on BNAPS books
- Online sales circuits
- The Horace W. Harrison online library



Contact: David G. Jones, Secretary
184 Larkin Drive
Nepean, ON Canada K2J 1H9

website: <http://www.bnaps.org>

BNAPS – *The Society for Canadian Philately*



R P S C PHILATELIC RESEARCH FOUNDATION

Collectors are encouraged to **Donate Philatelic Material** to the Foundation and receive a **Charitable Donation Receipt** for the appraised **Fair Market Value**.

We seek philatelic material **valued from \$500** with no upper limit - material can be general accumulations, bulk material and or world wide unorganized collections.

All material is appraised by a CSDA member

Donations are used to educate school age Children by providing necessary equipment and leadership aids to teach philatelic and Postal history principles. Assistance may be provided for appropriate research activities.

Cash donations are also welcome.

Questions should be directed to **Bob Traquair, Pres.**
bobtraq@yahoo.ca - or - (416)924-3271

ACCIDENTAL DAMAGE



Are you protected?

Stamp Insurance from **Hugh Wood Canada Ltd.**
Could be your answer

FOR ALL YOUR INSURANCE NEEDS CALL 416-229-6600
HUGH WOOD CANADA LTD.
4120 Yonge Street #201 - Toronto, Ontario, M2P 2B8

Canada Used Wholesale

BUYING - SELLING

REPURCHASE PLAN

Call **HUGH CASSELS** - 416-463-4188

227 Donlands Ave - Toronto, Ontario M4J 3P9

Looking for a unique exercise?

Hugh Cassels (See ad above) will sell you many thousands of the same stamp (Canadian) so you can look through them for cancels, perf and colour varieties.... or whatever interest that you have in a particular stamp or stamp series. When you are finished, he will buy back the remainder.

This suggestion comes to us from the Oshawa-Whitby club.

Domestic Rate Maple Leaf Stamps from ATMs

Mark Stelmacovich

Sparky_s54@hotmail.com

On April 14, 1998, Canada Post Corporation (CPC) introduced domestic rate, pressure sensitive (self-stick) stamps on sheetlets of 18. The intention was to distribute these stamps on a regular basis by way of ATM bank machines. Therefore, the dimensions of the sheetlets mimicked the size of Canadian paper money. Prior to engaging in the ATM process on a regular basis, CPC selected outlets in the southern Ontario area of Canada to test this procedure, in order to determine its practicality.

I first found out about this when reading a late March 1998 CSN article which stated, "The post office has teamed up with the Canadian Imperial Bank of Commerce for a one year pilot project that will let customers buy self-adhesive, domestic-rate letter stamps at several automated banking machines (ABMs) in Ontario." The article went on to note that the price per pane was \$8.10, plus GST, through locations in Whitby, Barrie, Oakville and Burlington. Shortly afterwards, I went to my CIBC and found further information on a flyer that outlined the details.

The back of the flyer listed all 21 of the ATM dispensing outlets. This information was wonderful. It assisted me in my search to purchase one sheetlet from each of these outlets. Given the time limitations, however, I only made it to 12 of the outlets. This did provide enough of a sample for me to learn more about these issues other than merely depending upon sheetlets obtained from Antigonish.

The sheetlets were not only available at CIBC ATMs, but also in ATM machines in malls, gas stations, grocery stores and variety stores. There was even one institutional location, Sheridan College in Oakville. The ATMs were located in a variety of socio-economic neighbourhoods.

I discovered that the dispensing of sheetlets from ATM machines was not always neat and tidy. The sheetlet obtained from the IGA in Oakville had discernible side-to-side 'track marks' from the top to the bottom of the sheetlet. Others have sharp scour marks, ink-like 'dirt', and frayed or bent corners. One has the number '69' written in pen on its reverse. Most notably, the surface of the stamps on my ATM sheetlets appear duller compared to those I received from Antigonish.



Need STAMPS?

Now you can get them
at selected CIBC bank
machines!



For the first time ever

in Canada, you can get postage stamps from selected CIBC bank machines in this area![†] Canada Post's special no-lick, self-stick 45¢ stamps are dispensed in sheets of 18. No need for cash-in-hand – it's a simple direct debit from your CIBC account. All you need is a CIBC VISA* card or CIBC Convenience Card[®]. It's post-haste convenience from CIBC and Canada Post!



The sheetlets have inscription details on a strip in the middle, thus dividing it into two halves of 9 (3 by 3) stamps. The intent is that the purchaser is able to peel away this middle inscription strip and then fold the sheetlet in two, creating a convenient wallet-sized format.

Sheetlets of 18 at the 46 cent domestic rate were released on December 28, 1998. An early January 1999 CSN article stated, "The fourth first-class stamp reproduces the stylized maple leaf image which Gottschalk & Ash International of Toronto designed for stamps, sold in panes of 18 stamps for a one-year test run from Canadian Imperial Bank of Commerce automated teller machines (ATM) in four communities near Toronto, Ontario." They sold for \$8.28 plus GST. I regret not having been able to obtain any of these from an ATM machine with a receipt.

A 1999 summer edition *Collections of Canada* magazine quietly outlined the withdrawal of these stamps. A May 1999 CSN article reported that an Antigonish staffer had said, "The first ATM stamp was released as a test and it went so-so. They decided to put out another one but it's not doing well." CSN also noted that the ATM and coil-versions of the 45 cent stamp are rarely seen on commercial mail.

The 45¢ sheetlets are Scott 1696a and the 46¢ sheetlets are Scott 1699a. They were produced by the Avery Dennison Corporation via four-colour photogravure with USA tagging on FCP paper.

I wonder if the idea of ATM stamps, which appealed (pardon the pun) to some, will ever be revisited by Canada Post. Only time will tell.

Zygmunt Borowski

Buy and Sell Stamps, Coins and Paper Money

www.Ziggmi.com

Email 1: bzygmunt@hotmail.com

Email 2: borowski503@ziggmi.com

Tel: 416-454-2790



UNI-SAFE

UNITRADE Associates

IMPORTER DISTRIBUTORS MANUFACTURERS PUBLISHERS

99 FLORAL PARKWAY TORONTO, ONTARIO M6L 2C4

TEL: (416) 242 - 5900 or 1 (800) 939 - 3935 FAX: (416) 242 - 6115

EMAIL: unitrade@rogers.com WEBSITE: <http://www.unitrade.com>

*** Visit us at our UNIPLEX show ***
Along with many of your Stamp & Coin Dealers
Jan. 13, 14 & 15th 2012

Located: Rameses Temple Shrine Club
3100 Keele Street (between Wilson & Sheppard) at Maryport
For more information call: 416.242.5900

Making Short Stamp Exhibits

a step by step guide by George Speers

32 pages including 12 coloured pages with sample
exhibits: \$10

mailing costs (any number): \$2

Jade Publications

25-229 Lynden Rd., Bradford, ON N3R 8A7

Email: gspee@rogers.com

Santa's Canadian Resident Status

Tony Shaman

tshaman@rogers.net

Christmas in 2011 marks the 30th year that Canada Post has sponsored the H0H 0H0 Santa Letter-Writing program on a national basis. Prior to 1982, Canada Post employees in several communities across the country took it upon themselves to send replies to letters from area youngsters addressed to Santa Claus. But, each year thousands more “Dear Santa” letters ended up in the Undeliverable Mail Office.

As early as 1972, Canada Post employees expressed their unhappiness with that state of affairs and wondered if there was not some way that children's letters to the jolly old elf could be answered. Until 1967 most letters to Santa were sent to local department stores to be answered and, indeed, many readers in the Toronto area will recall the colourful Santa letters that the T. Eaton Company sent to youngsters.

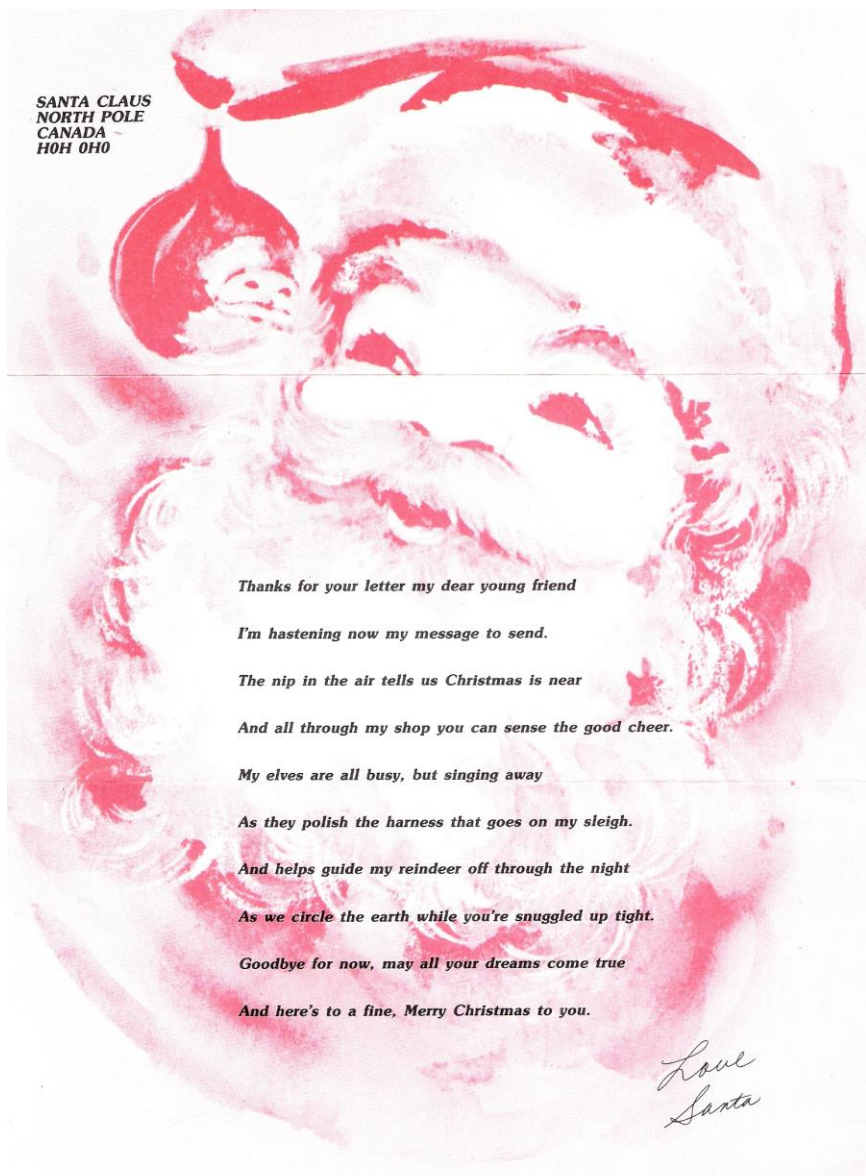
Finally, in 1982, Canada Post rolled out its national Santa Letter-Writing Program. It consisted of one English letter version and one in French. Canada Post employees volunteered their time sending out the letters and the Post Office paid for the printing, mailing costs. Every child that sent Santa a letter at his North Pole H0H 0H0 address received a reply.

Not surprisingly, the Program was a huge success from the start. About a half million reply letters were sent to children in the early years. That number has increased to over 1 million each year. Although the number in 2009 was down somewhat from previous years, from 2004 to 2008 they showed an approximate year-over-year increase of 20% with 1,425,363 letters mailed out in 2008. Until 2005, the envelopes were imprinted with a variety of permit lettermail designs. In 2006 and after, covers were imprinted with a likeness of each year's corresponding domestic rate postage stamp.

All covers feature attractively designed corner card illustrations with a theme in keeping with the illustrations on the Santa letters themselves. In 1986 Santa followed the greeting card industry by adding the special postal code matrix on his covers designed to help speed up mail deliveries. This “Greet More” matrix was discontinued in 1991. These features make the covers eminently collectable by philatelists and postal history enthusiasts alike.

Although Santa belongs to the world, according to the H0H 0H0 postal code that Canada Post assigned his North Pole Workshop address, the jolly old elf enjoys official resident status in Canada.

This 1982 national Santa letter features a youthful looking gift-giver sending his message to youngsters in poetic form.



SANTA CLAUS
NORTH POLE
CANADA
H0H 0H0

Thanks for your letter my dear young friend

I'm hastening now my message to send.

The nip in the air tells us Christmas is near

And all through my shop you can sense the good cheer.

My elves are all busy, but singing away

As they polish the harness that goes on my sleigh.

And helps guide my reindeer off through the night

As we circle the earth while you're snuggled up tight.

Goodbye for now, may all your dreams come true

And here's to a fine, Merry Christmas to you.

*Love
Santa*

My Fascination with Stamps of Ireland

As a long time stamp collector and graphic artist, I have always been more interested in the design and historic content of stamps than their value. To me, it is a world of geography, history, art, myth, politics, joy and sadness. I chose the stamps of Ireland because they seemed plentiful, available, and often passed over in search of other countries.

My collection covers the past, the wars, myths and saints, from St. Patrick onward to modern times Europe. Ireland is a small country with extensive connections to the rest of the world. I collected all of the Irish stamps I could find. I researched, explored by topic and now I have, standing at 20 pages, eventually to be bound Japanese style, a one-of-a-kind book. Eventually, the strangely drawn animals on definitives (illustrated on the next page) got my attention. After all, it was obviously Celtic Art, but why? So, my collection started with four animals.

By the 6th century, wars and political upheaval had unraveled the strength of Rome. The literacy of the Western world had been destroyed, and libraries burned. Ireland, however, had settled down. St. Patrick was teaching Christianity, incorporating many old beliefs, and also teaching the Roman alphabet. The Irish recognised the strength of learning and writing, relishing in traditional art, old myths and new religion.

They created manuscripts of great beauty, many of which still exist, such as the Book of Kells, the Book of Durrow, the Lindisfarne Gospels and many others. In these books, I found the answer to three of the four animal stamps. St. Matthew's emblem was a man with a book and has not been used in these stamp designs. However, St. Mark's emblem was a lion, St. Luke's a calf, and St. John's an eagle. In some drawings illustrating the old manuscripts, they all have wings.

Scott's Catalogue says our first stamp is a dog. On research I find him nearly identical to the Lion illustrated in the Book of Durrow. Circles were an Irish prehistoric design for the worship of the sun and our lion has many suns! The style and design of the calf and eagle are very close to those in the Book of Kells. That leaves, then, the stag or deer, with large horns and somewhat like the lion's design. I believe this to have come from a different source....the Irish deer that became extinct at the last ice age.

Fossil skulls of giant deer, eight feet tall at the shoulder, have been found. This deer was shown in the 1999 set of Extinct Animals, and also in the joint Canada/Ireland issue, Biosphere Reserves. This heroic Irish animal very likely was the source of the design of the deer stamp.



Philately can take you in so many directions. I have learned a lot about Ireland's history in this project.....and look forward to learning more.

Mail from the Siege of Przemyśl

Jerry Piotrowski
jerrypiotrowski74@hotmail.com

In the late 18th century the Kingdom of Poland ceased to exist as a sovereign state for over 120 years, as it was partitioned and occupied by forces of the Russian Empire, the Kingdom of Prussia and the Austrian Empire. The fortress city of Przemyśl lay in the south east of the area that was in Austrian hands and close to the Russian occupied territories. Przemyśl lay on the San River and even before the railroad connected it to Krakow in the west and Lwow in the east in the mid 19th century it was an important city. Przemyśl was called a fortress city but in fact was comprised of a series of fortifications built around the city. The plans for 41 fortifications were drawn up in the early 1800's but it was not until diplomatic relations between Austria and the Russian Empires soured that construction began in 1854. Originally the defenses were made up earthen entrenchments but later were converted to permanent solid fortifications.

With the start of WW 1 serious defense preparations began in Przemyśl and by September 4, 1914 the civilian population had been evacuated. On September 17, Russian forces began a siege of the city and by September 26 had it sealed off completely. Relief forces at one time pushed the Russians back but without long-term success. By March 14, 1915, all the outer fortifications had been captured or destroyed by the Russians. The defenders burned documents on March 19, then destroyed their artillery on March 22 and surrendered to the Russian forces.

Several ways were used to get mail out of the besieged city. As well as using pigeons and manned and unmanned balloons, use was made of small aircraft to fly mail in and out of Przemyśl. The outbound mail consisted mainly of quite thin postal cards most of which carried a number of markings. Shown here are two Field Post cards sent from the besieged city. A previous owner's pencil markings on the backs of these two items in my collection indicate that they were carried on the 8th and 9th flights. Both show a circular cancellation of IX/54. This cancellation type as a square was originally used in the Austrian Empire for canceling postal money orders.

IX signified the region of Galicia while the 54 was for the town of Przemyśl. Orders were issued in 1914 that in the case of war items of field post must be cancelled without location names, hence the use of the “camouflage” cancellation.

The first cover (from the 8th flight) shows a “Fliegerpost Przemyśl 1 / 1915” handstamp along with a “ZENSURIERT” handstamp. The number 10160 on the upper left is a sequential number identifier. The second item (from the 9th flight) as well as a “ZENSURIERT” marking shows a “Fliegerpost Przemyśl 1 / Janner 1915” handstamp, in a larger font and this time the number 21994 is written in pencil.





Mark your calendars !

The Toronto Stamp Collectors Club Annual Christmas Dinner

Tuesday, December 13, 2011 (6 p.m. Reception for 7 p.m. Dinner)

The Badminton & Racquet Club at 25 St. Clair Ave. West

Guest speaker, Janet Walters, Curator of Toronto's First Post Office

Cost is \$65 per person

Reservations: Owen White at P.O. Box 860, Station K, Toronto M4P 2H2
or owen.white@sympatico.ca by no later than Monday, December 5, 2011

Bramalea Stamp Club Annual Show and Bourse

Saturday, February 4, 2012 (9:30 am to 4:30 pm)

Terry Miller Recreation Centre (Judith Nyman Cafeteria)

1305 Williams Parkway

(south west corner of Bramalea Road and Williams Parkway)

Brampton, Ontario

10 dealers, exhibits, youth table, refreshments, free admission

ORAPEX 2012

Celebrating the Diamond Jubilee of Queen Elizabeth II

Saturday, May 5 and Sunday, May 6, 2012

The RA Centre, 2451 Riverside Drive, Ottawa

40 dealers, 30 exhibits, 25 prizes, youth table, free admission and parking

Information: Robert Pinet at pinet.robert@gmail.com or (613) 745-2788

Exhibiting registration form: www.racentre.com) or

Contact Brian Watson at brian150@sympatico.ca.

Royal*2012*Royale

Celebrating the life of Sir Sam Steele of the NW Mounted Police

&100 years of philately in Edmonton

June 1-3, 2012

West Edmonton Mall Convention Centre, Edmonton, Alberta

For more information: www.royal2012royale.com

**.....and, look for the PhilaJournal ads for the
North Toronto Stamp Club's Bourse, UNITRADE
(UNIPLEX) and Cathex shows, in this issue!**

ST. CATHARINES STAMP CLUB'S

Annual Exhibition & Bourse

63rd
CATHEX
Saturday

JANUARY 21, 2012

10 a.m. to 5 p.m.

Grantham Lions Club

732 Niagara Street, St. Catharines

Show Hall is 4 km north of the QEW
on Niagara Street, just short of the Lakeshore Rd.

Take Niagara St. exit in St. Catharines

Free Admission & Parking • Lunch Counter • Exhibits
Club Circuit • 12 Dealers • Children's Area

visit our web site at: www.stcatharinesstampclub.ca



GTAPA Clubs' Resources

In the article about available resources (page 26/27 of Fall 2011 PhilaJournal) for use by member clubs, we neglected to mention the name of the one of the clubs that has loaned equipment to the GATPA.

The Scarborough Stamp Club owns the PA system and the street sandwich boards. We appreciate their contributions to the Alliance.

GTAPA CLUB DIRECTORY

We work best when we work together!

Ajax Philatelic Society RPSC Chapter #163

Meets the 2nd & 4th Thursdays of each month, 6:30 pm to 9 pm at Ajax Public Library on Harwood Road South (south of the 401). Free parking and wheelchair accessibility

Contact

Don Beaumont 905-426-3612 donaldbeaumont@yahoo.com

Ron Christie 905-432-7628 ronaldchristie@rogers.com

David Goreski 905-579-3349

Bramalea Stamp Club RPSC Chapter #144

Meets the 1st Sunday, from 2 to 4 pm, October to June and the 3rd Tuesday, from 7 to 9 pm, year round at Terry Miller Recreation Complex, Williams Parkway (between Dixie Rd and Bramalea Rd.), Brampton.

www.bramaleastampclub.com

Contact

Bob Thorne, FRPSC 905-792-3526 r.thorne@sympatico.ca

East Toronto Stamp Club

Meets the 1st and 3rd Tuesday of each month, October to May, at 9:30 to 11 a.m.

Stan Wadlow Senior's Action Centre on Cedarvale Ave., Woodbine & Cosburn

Contact

Doug Cockburn 416-757-4072

Insurance & Banking Philatelic Society RPSC Chapter #82

Meets on the 3rd Thursday each month at Hampton Securities, 141 Adelaide Street West.

Contact

Joe Janthur 416-364-4112

North Toronto Stamp Club RPSC Chapter #5

Meets the 2nd and 4th Thursdays of each month (except July, Aug and Dec) at Yorkminster Park Baptist Church, 1858 Yonge Street (a short walk north of the St. Clair TTC subway station).

Members begin arriving between 6:30 and 7:00pm

Contact

George Sachs 416-453-5641 ntscpresident@gmail.com

Ernie Nyitrai 905-477-1511 enyitr618@rogers.com

North York Philatelic Society RPSC Chapter #21

Meets the 1st and 3rd Wednesday of each month from Sept to June
July and August, 3rd Wednesday only

Skaters' Lounge at the Carnegie Centennial Arena, 580 Finch Avenue

Contact

Mike Turk 905-731-8380 turkm@accessv.com

Oshawa/Whitby Stamp Groups RPSC Chapter #230

The Oshawa/Whitby stamp groups meet 4 times every week, twice in Oshawa, on Wednesday evenings from 6 pm to 8.30 pm, at Conant Seniors Centre on 115 Grassmere Ave. Oshawa and Friday mornings from 10:45 am to 12:45 pm at Legends Community Centre 1661 Harmony Rd. N. Oshawa.

The Whitby/Brooklin Group meets Monday morning 10 am to noon at Whitby Seniors Building, 801 Brock Street Whitby. and every Tuesday evening 7 pm to 9 pm at Brooklin Community Centre 8 Vipond Rd in Brooklin

Contact

Brooklin/Whitby/Oshawa Jim Stevenson 905-576-4449

Oshawa Lawrence Worrall 905-436-9034

Oshawa/Ajax Ron Christie 905-432-7628

Ajax/Whitby/Oshawa Don Beaumont 905-426-3612

Oshawa/Whitby Larry Friend 905-723-8798

lfriend@sympatico.ca

Polish-Canadian Coin and Stamp Club “Troyak”

Meets on the last Sunday of each month, except holidays, at 4:30 pm
John Paul II Polish Cultural Centre, 4300 Cawthra Rd., Mississauga,
English speaking meeting held on the 2nd Tuesday from 7pm to 9pm
Etobicoke Civic Ctre, 399 West Mall, (Hwy 427 & Burnhamthorpe)

Contact

Wieslaw Grzesicki 416-258-1651 info@troyakclub.com
www.troyakclub.com

Scouts On Stamps Society International

Maple Leaf Chapter SOSSI

Meets on the 3rd Sunday of the month from Sept to May at 2:00 pm
(coffee/cookies at 1:30 pm).

Meetings are held in different locations. The schedule for the
2011/2012 season is: Sept. 18 Etobicoke/Oct 16 Kitchener, Scout
House/ Nov 20 Etobicoke/ Mar 18 Vincent Greene Foundation,
Toronto/Apr 15 Hamilton, Scout House/ May 27 Niagara Falls,
Scout House/Museum

Contact

Tony Manson 416-447-4281 tony.manson@sympatico.ca.

Toronto Stamp Collectors' Club Founded 1892

Meets on the 2nd Tuesday of every month (except July and Aug) at
Yorkminster Park Baptist Church, Room 502, 1858 Yonge Street (a
short walk north of the St. Clair TTC Subway Station). Limited
parking is available in the church parking lot and a City parking lot is
within 100 yds. of the church. Members gather at 7 p.m. for a
programme commencing at 7:30 p.m.

Contact

Owen White 416-481-4731 owen.white@sympatico.ca

Scarborough Stamp Club RPSC Chapter #223

Meets on the 1st and 3rd Tuesday of each month except December,
July and August, at Cedarbrook Community Centre, Rooms 1 & 2,
main floor, 91 East Park Blvd. (near Markham and Lawrence),
Scarborough.

Contact

Doug Cockburn 416-757-4072

Ukrainian Collectibles Society (Toronto) RPSC Chapter #228

Chapter of the Ukrainian Philatelic and Numismatic Society

Meets on the 1st Monday of every month at 7 pm

Ukrainian Canadian Social Services, 2445 Bloor Street West, Toronto

Contact

Jerry Kalyn 416-251-6898 ucst@upns.org

West Toronto Stamp Club RPSC Chapter #14

APS Chapter #174151

Meets on the 1st, 2nd, 3rd and 4th Tuesdays from Sept to June at 7:30

Fairfield Senior Centre, 60 Lothian Avenue, Etobicoke

Regular meetings on the 2nd and 4th Tuesdays feature auctions

Meetings on the 3rd Tuesday feature our discussion group

The 1st Tuesday is the Machin Study Group

Contact

Frank Alusio, FRPSC 416-621-8232 falusio@sympatico.ca

Garfield Portch, FRPSC 416-239-0623 gportch@ca.inter.net



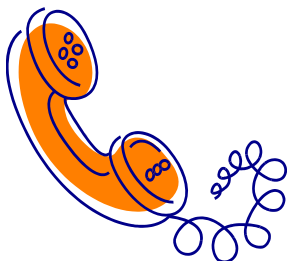
Check it out!

West Toronto Stamp Club website

www.westtorontostampclub.org

We now have added two main features:

- 1. Records of Machin Study Group meetings**
- 2. Scans of some featured items for upcoming auctions.**



**Please call me with changes, or
corrections, to the information
about your club.**

Susan 416-690-4666

or

sbutler@ilap.com



Be a part of the action!

ADVERTISE.....

1/4 page \$15 per issue - 4 issues for \$60

1/2 page \$40 per issue - 4 issues for \$120

Full Page \$60 per issue - 4 issues for \$200

Contact: Larry Friend 905-723-8798 or lfriend@sympatico.ca

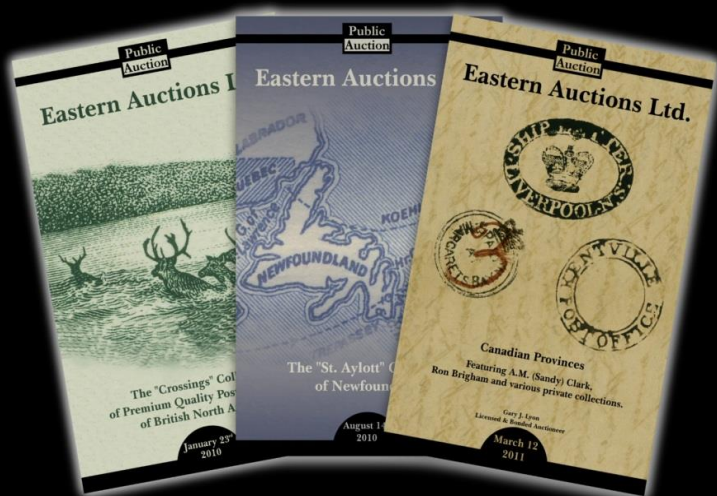
WRITE..... Share your stories with us. Tell us about how you got started in collecting or a change in direction that you are taking or even about your favourite stamp. It does not have to be a long article, just personal reflections of interest to other collectors.

DEADLINE.....Articles, News or Photos for the next issue should reach the editor by January 22, 2012.

REPRINTS.....Permission is granted to reprint material from PhilaJournal, provided that appropriate credit is given to both PhilaJournal and the author.

Eastern Auctions Ltd.

Would like to showcase your collection.



Canada's most trusted auction house

Since 1980 we have steadily built a reputation for outstanding realizations. Numerous record prices have been achieved for superior quality stamps.

Take advantage of our friendly and professional service. Your collection will be described by our expert lotter and lavishly illustrated in our deluxe catalogue. Commission rates are very competitive and prompt payment is always guaranteed.

Contact us today for further details.



Eastern Auctions Ltd.

P.O. Box 250 - Bathurst - New Brunswick - E2A 3Z2 - Canada

Telephone: 1 (800) 667-8267 - Fax: 1 (888) 867-8267 - E-mail: easternauctions@nb.aibn.com

Your Reliable Source for British North America Philately

As Canada's leading Stamp dealers, and the only one offering full service to collectors, we provide the following resources to philatelists:

- An extensive newspaper format price list every six weeks.
- A rare stamp list of individual offerings every three weeks.
- A selected rarities catalogue offered every four months.
- The largest inventory of B.N.A. stamps anywhere in the world.
- An extensive stock of philatelic literature.
- A large inventory of Federal and Provincial duck stamps.
- A huge stock of B.N.A. plate proofs and die proofs.

Join our mailing list now and start receiving our wide selection of catalogues.

Gary J. Lyon (Philatelist) Ltd.
P.O. Box 450, Bathurst, New Brunswick, E2A 3Z4, Canada
Email: gjstamps@nb.aibn.com Website: www.garylyon.com
TOLL FREE IN NORTH AMERICA
1 (800) 665-6262 (T-8267) Fax: 1 (506) 546-6627

January, 2010

UNITED STATES CUSTOMERS
If paying in US funds, please deduct 10%.

Selected Rarities
Catalogue VI

Gary J. Lyon Rare Stamps Vol. #273

British Columbia
New Brunswick
Nova Scotia
Newfoundland
Prince Edward Island
Canada

Gary J. Lyon (Philatelist) Ltd.

Gary J. Lyon (Philatelist) Ltd.

Gary J. Lyon (Philatelist) Ltd.

January, 2010



Gary J. Lyon (Philatelist) Ltd.

P.O. Box 450 - Bathurst - New Brunswick - E2A 3Z4 - Canada
Tel: 1(506) 546-6363 - Fax 1(506) 546-6627
Email: gjstamps@nb.aibn.com - Website www.garylyon.com